



KRISHNA

5DN SERIES

SINGLE PHASE, HERMETICALLY SEALED  
THERMAL OVERLOAD PROTECTOR (TOP)  
SWITCHES

INTRODUCTION

"Krishna" 5DN series hermetically sealed single phase on-winding overload protector is engineered with world's finest technology and developed with integrity and an unmatched commitment to quality. These are manufactured as per international quality standards at our most modern manufacturing facility at Vasai, INDIA.

SALIENT FEATURES

- ◇ Hermetically sealed single phase on-winding protector.
- ◇ Snap acting and auto-reset type.
- ◇ Two Contact ratings to provide highest reliability.
- ◇ Extra option of start winding protection.
- ◇ Suitable for high pressure requirements of rotary compressors.
- ◇ Wide application range from 1 HP to 5 HP.
- ◇ Compact and reliable design suitable for installation directly on motor winding.
- ◇ Rugged construction resistant to mechanical damages.

APPLICATIONS

"Krishna" 5DN Series Motor Protectors are snap acting and auto reset type which are wired in series with and mounted on motor windings. These protectors sense winding temperatures and respond to changes in line current to protect against various overload conditions like:

- ◇ Running overload
- ◇ High/Low voltage locked rotor
- ◇ Loss of refrigerant charge
- ◇ Short circuit of capacitor
- ◇ High discharge temperature

USAGES

"Krishna" 5DN Series Hermetically Sealed Single Phase on-winding protectors are mainly used in:

- ◇ Window and split air conditioning systems
- ◇ Rotary air conditioning compressors
- ◇ Heat pump compressors
- ◇ Commercial motor that function in corrosive environments

PRODUCT CERTIFICATION

Agency	File Number	Standard Number
UL	E247727	2111
CB	HU000769	IEC60730-2-2:2001 +A1 IEC60730-1:2010

THE ETERNAL GUARDIAN FOR MOTOR PROTECTION

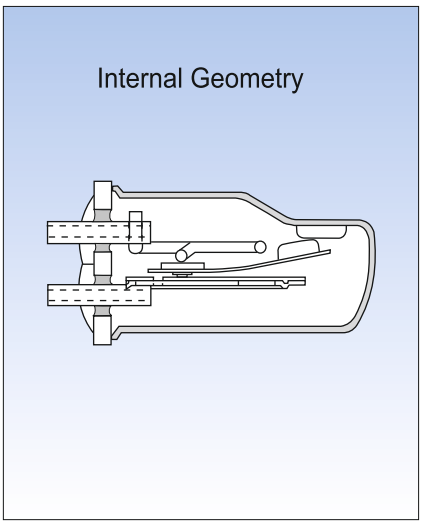
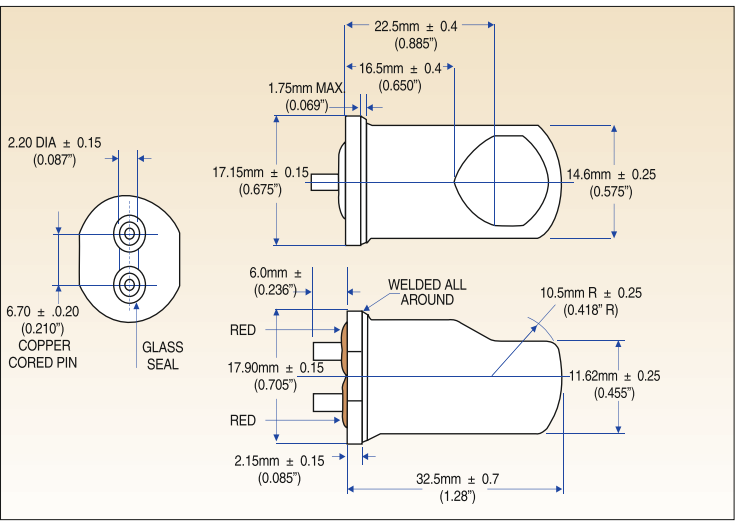
PROTECTOR RATINGS

Series	Product Family	Start Winding	Line Voltage	Lock Rotor Current	HP Range
200	03 XX 13 XX	Yes No	230V	* 100 Amp	* 1 - 3 1/2
500	06 XX 16 XX	Yes No	230V	* 140 Amp	* 3 1/2 - 5

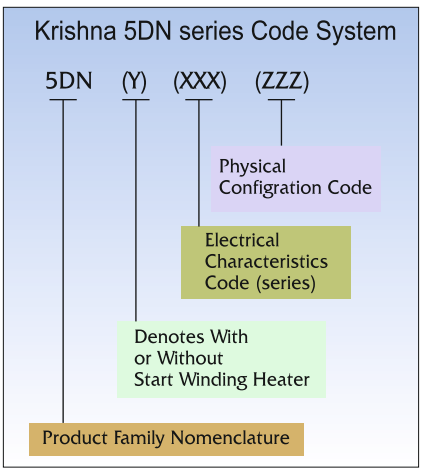
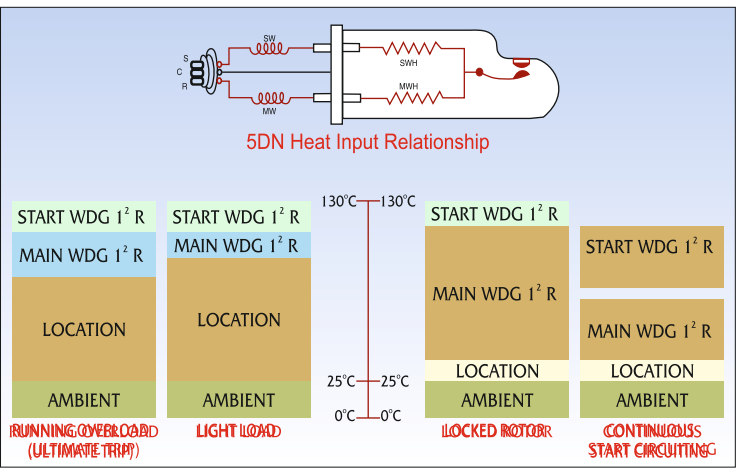
\* To be used as a guide for selection only

Specifications
Open temperature....90°C-150°C in 5°C increments.
Tolerance.....±5°C open ±9°C close

DIMENSIONS



CIRCUIT DIAGRAM



Shree Krishna Controls Pvt. Ltd. (SKCPL) provides customer assistance in varied technical areas. Since SKCPL does not possess full access to data concerning all of the uses and application of customer's products, no responsibility is assumed by SKCPL neither for customer product design nor for any infringements of patents or right of other which may result from SKCPL assistance / products. Due to our ongoing research products are updated and hence the above specifications are subject to changes without prior notice.